



UNIZULU

2018/2019

A university we can call our own!

Facts & Figures



UNIVERSITY OF
ZULULAND



OUR VISION

A leading comprehensive university providing quality education.

OUR MISSION

To provide globally competitive graduates, relevant to the human capital needs of our country by providing a quality education that upholds high standards of research and academic excellence.

OUR VALUES

Mutual Trust

Efficiency

Accountability

Innovation

Teamwork

UNIZULU AT A GLANCE

The University of Zululand (UNIZULU) is located within the Umhlathuze Municipality, the fastest growing hub and employer in northern KwaZulu-Natal. UNIZULU is a comprehensive university offering approximately 252 accredited degrees, diploma and certificate courses across its faculties of Arts; Education; Science and Agriculture; and Commerce, Administration and Law at the KwaDlangezwa and Richards Bay campuses.

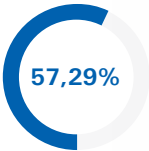
Popular courses include Law, Education, Nursing Science, Agronomy, Hydrology, Social Work, Biochemistry, Microbiology, and Sport Science. UNIZULU students have the opportunity to specialise their degrees according to their areas of interest, within their respective fields. In addition, the University believes in promoting a culture of learning in an environment that is conducive to personal growth and academic development. To further academic development, assistance is provided through the provision of augmented and foundation courses to unleash students' potential.

The dome-shaped King Bhekuzulu Hall is one of the largest of such structures in South Africa. Its space is ideal for academic and cultural events and can be transformed according to the nature and size of an event. A range of informative and entertaining events are regularly held here.

The UNIZULU library spans six floors, with a sitting capacity of more than 1700 and its users have access to 306708 volumes of books and multimedia.

2019 SUMMARY

Students Total:17713



Female

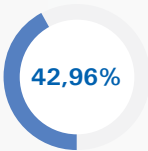


Undergraduate

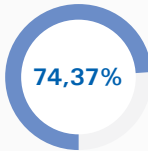


African

Academic Staff Total:277



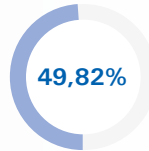
Female



African



International



Staff with PhD



NRF-rated Researchers



2018 Graduates



Hectares of Estate

QUICK FACTS

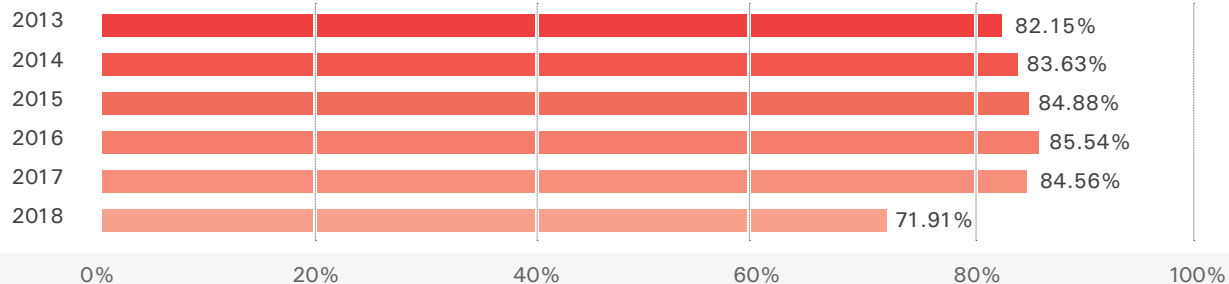
1. The University has 14 NRF-rated researchers in the following fields: English; Creative Arts; Politics and International Studies; Information Science; Psychology; Mathematics; Chemistry; Physics and Engineering; Botany; Agriculture and Zoology.
2. Deputy Chief Justice of the Republic of South Africa, Raymond Mnyamezeli Mlungisi Zondo, has been appointed as UNIZULU's new chancellor for a five-year renewable term. In his role as Chancellor, he will act as a titular head of the University with no executive powers and his formal responsibilities are set out in section 6 of the UNIZULU Statue include the conferment of degrees during the University's graduation ceremonies.
3. In 2018 UNIZULU recognised the extensive philanthropic work undertaken by His Royal Majesty, King Zwelithini Goodwill, to alleviate poverty and suffering his subjects. To acknowledge the leadership of King Zwelithi, His Royal Majesty was conferred with an Honorary Doctorate in Social Work (*honoris causa*).
4. UNIZULU has successfully received full accreditation for BCOM (Accounting Science) degree from the South African Institute of Chartered Accounts (SAICA).
5. The Council on Higher Education (CHE) has confirmed full accreditation for the UNIZULU LLB programme in the Faculty of Commerce, Administration and Law.

STUDENT PROFILE

Enrolment Trends

		2014		2015		2016		2017		2018		2019	
Gender	Female	10096	60,59%	9978	59,07%	10308	58,34%	10017	58,22%	10267	57,76%	10148	57,29%
	Male	6567	39,41%	6913	40,93%	7360	41,66%	7187	41,78%	7507	42,24%	7565	42,71%
Total		16663	100%	16891	100%	17668	100%	17204	100%	17774	100%	17713	100%
Race	African	16517	99,12%	16755	99,19%	17537	99,26%	17106	99,43%	17698	99,57%	17626	99,51%
	Coloured	33	0,20%	33	0,20%	27	0,15%	25	0,15%	25	0,14%	24	0,14%
	Indian	62	0,37%	66	0,39%	65	0,37%	47	0,27%	31	0,17%	35	0,20%
	White	46	0,28%	31	0,18%	32	0,18%	20	0,12%	13	0,07%	25	0,14%
	No Information	5	0,03%	6	0,04%	7	0,04%	6	0,03%	7	0,04%	3	0,02%
Total		16663	100%	16891	100%	17668	100%	17204	100%	17774	100%	17713	100%
Qualification Level	UG	14871	89,25%	15290	90,52%	15777	89,30%	15512	90,17%	15990	89,96%	15887	89,69%
	PG	1792	10,75%	1601	9,48%	1891	10,70%	1692	9,83%	1784	10,04%	1826	10,31%
Total		16663	100%	16891	100%	17668	100%	17204	100%	17774	100%	17713	100%

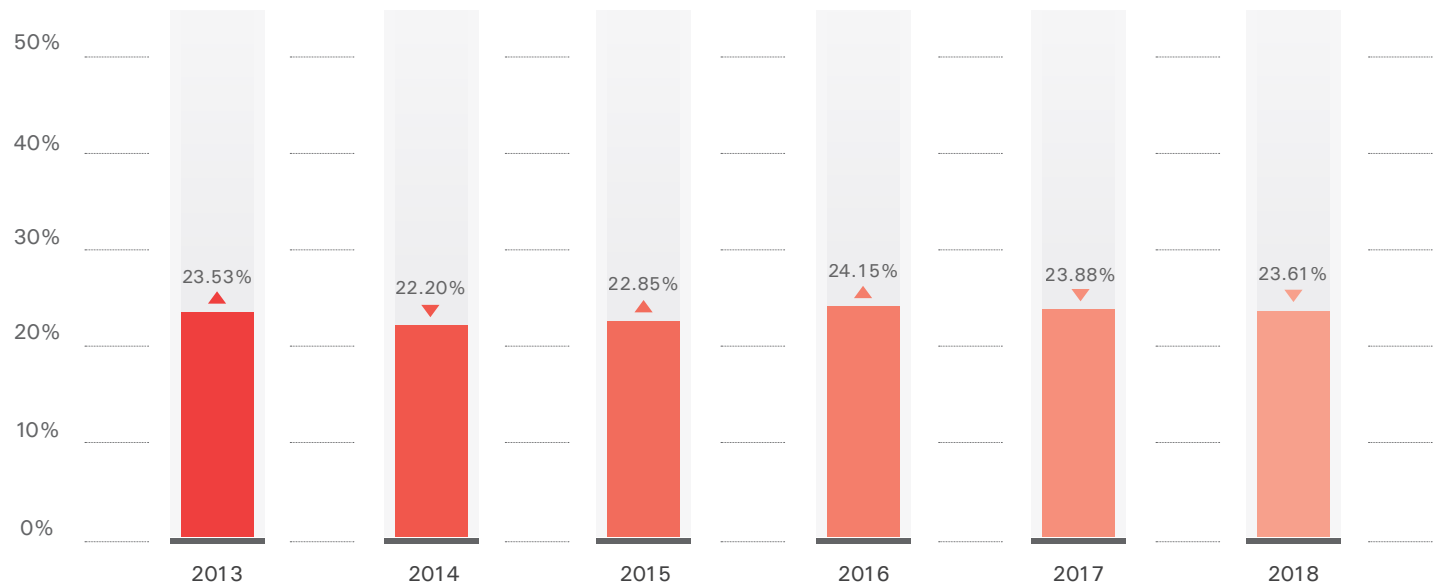
Success Rates



Graduation Trends

		2014		2015		2016		2017		2018	
Gender	Female	2499	67,54%	2403	62,27%	2537	59,46%	2480	60,37%	2526	60,19%
	Male	1201	32,46%	1456	37,73%	1730	40,54%	1628	39,63%	1671	39,81%
Total		3700	100%	3859	100%	4267	100%	4108	100%	4197	100%
Race	African	3671	99,22%	3822	99,04%	4234	99,23%	4075	99,20%	4161	99,14%
	Coloured	4	0,11%	8	0,21%	7	0,16%	9	0,22%	9	0,21%
	Indian	10	0,27%	17	0,44%	11	0,26%	18	0,44%	19	0,45%
	White	14	0,38%	11	0,29%	13	0,30%	6	0,15%	8	0,19%
	No Information	1	0,03%	1	0,03%	2	0,05%	-	0,00%	-	0,00%
Total		3700	100%	3859	100%	4267	100%	4108	100%	4197	100%
Qualification Level	UG	2883	77,92%	3141	81,39%	3374	79,07%	3267	79,53%	3330	79,34%
	PG	817	22,08%	718	18,61%	893	20,93%	841	20,47%	867	20,66%
Total		3700	100%	3859	100%	4267	100%	4108	100%	4197	100%

Graduation Rates



STAFF PROFILE

Permanent Academic Staff

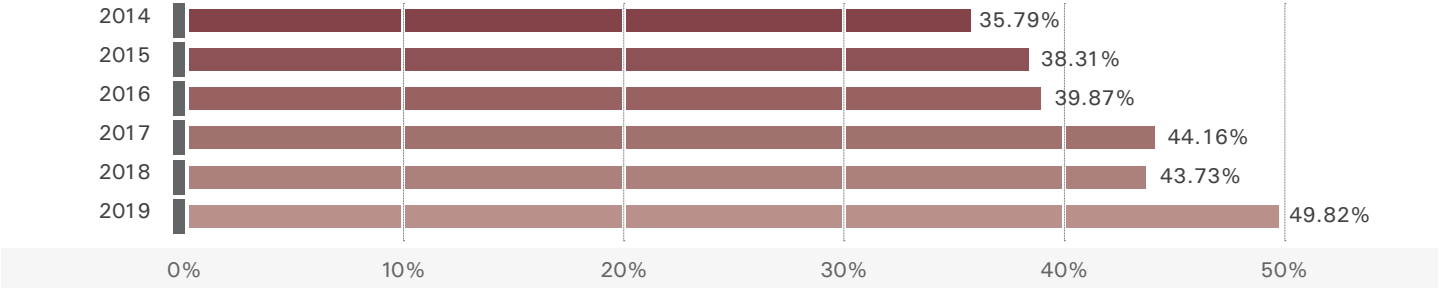
		2014		2015		2016		2017		2018		2019	
Gender	Female	120	42,11%	124	42,03%	130	42,48%	139	43,85%	124	42,03%	119	42,96%
	Male	165	57,89%	171	57,97%	176	57,52%	178	56,15%	171	57,97%	158	57,04%
Total		285	100%	295	100%	306	100%	317	100%	295	100%	277	100%
Race	African	201	70,53%	204	69,15%	219	71,57%	236	74,45%	219	74,24%	206	74,37%
	Coloured	2	0,70%	2	0,68%	2	0,65%	1	0,32%	-	0,00%	-	0,00%
	Indian	29	10,18%	33	11,19%	32	10,46%	33	10,41%	30	10,17%	27	9,75%
	White	53	18,60%	56	18,98%	-	0,00%	46	14,51%	46	15,59%	44	15,88%
	No Information	-	0,00%	-	0,00%	53	17,32%	1	0,32%	-	0,00%	-	0,00%
Total		285	100%	295	100%	306	100%	317	100%	295	100%	277	100%
Rank	Professor	15	5,26%	17	5,76%	19	6,21%	16	5,05%	19	6,44%	19	6,86%
	Associate professor	23	8,07%	23	7,80%	28	9,15%	30	9,46%	26	8,81%	25	9,03%

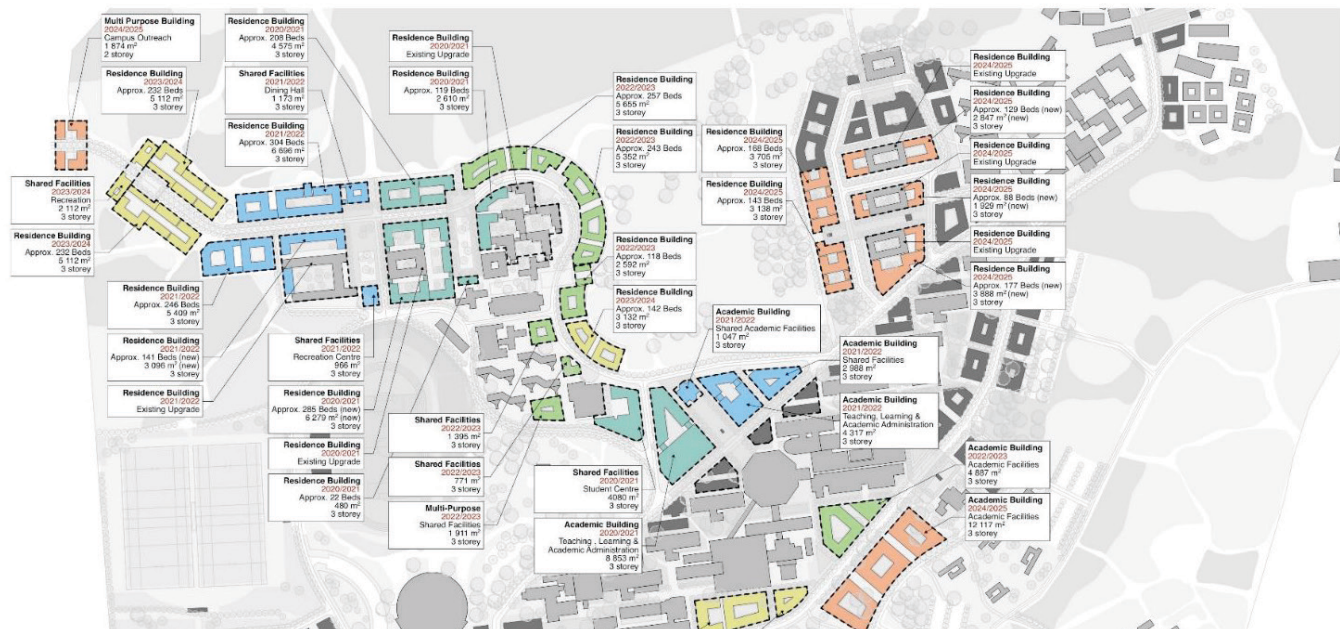
	Senior lecturer	44	15,44%	45	15,25%	50	16,34%	54	17,03%	55	18,64%	48	17,33%
	Lecturer	173	60,70%	186	63,05%	190	62,09%	204	64,35%	185	62,71%	179	64,62%
	Junior lecturer and below	30	10,53%	24	8,14%	19	6,21%	13	4,10%	10	3,39%	6	2,17%
Total		285	100%	295	100%	306	100%	317	100%	295	100%	277	100%
Nationality	South African	256	89,82%	267	90,51%	276	90,20%	284	89,59%	256	86,78%	250	90,25%
	Asia	1	0,35%	1	0,34%	1	0,33%	1	0,32%	2	0,68%	2	0,72%
	Australia	-	0,00%	-	0,00%	-	0,00%	-	0,00%	-	0,00%	1	0,36%
	Europe	1	0,35%	2	0,68%	2	0,65%	1	0,32%	2	0,68%	1	0,36%
	SADC	18	6,32%	16	5,42%	14	4,58%	17	5,36%	21	7,12%	13	4,69%
	Other African	9	3,16%	9	3,05%	13	4,25%	14	4,42%	14	4,75%	10	3,61%
	Other	-	0,00%	-	0,00%	-	0,00%	-	0,00%	-	0,00%	-	0,00%
Total		285	100%	295	100%	306	100%	317	100%	295	100%	277	100%

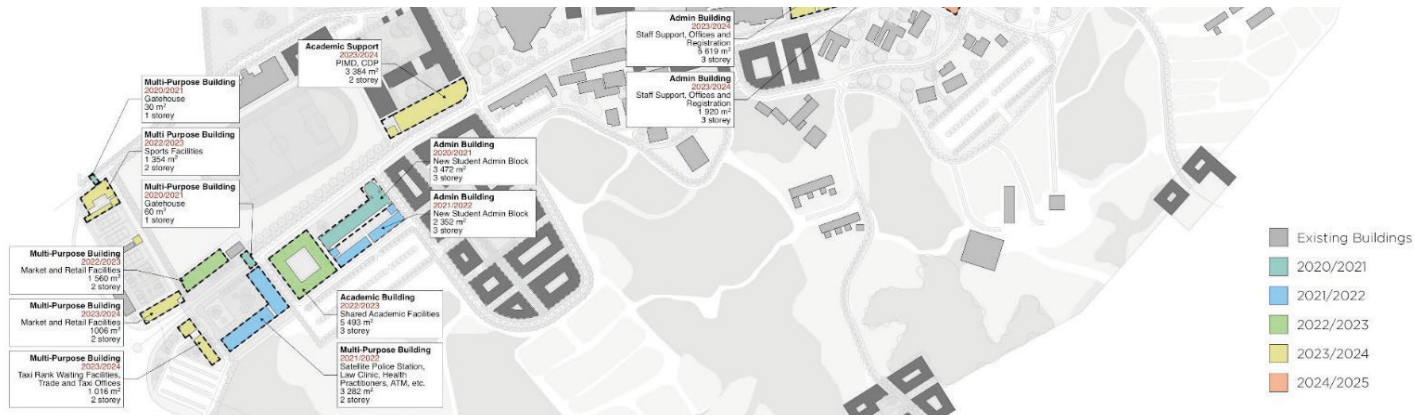
Academic Staff Full-Time Equivalent

		2014		2015		2016		2017		2018		2019	
Gender	Female	156,39	42,73%	152,60	42,51%	153,80	42,33%	153,219	42,80%	130,338	42,61%	113,26	43,02%
	Male	209,56	57,27%	206,39	57,49%	209,58	57,67%	204,79	57,20%	175,57	57,39%	150,00	56,98%
Total		365,94	100%	358,99	100%	363,38	100%	358,01	100%	305,91	100%	263,26	100%
Race	African	260,32	71,14%	256,08	71,33%	262,84	72,33%	268,216	74,92%	228,397	74,66%	196,18	74,52%
	Coloured	2,92	0,80%	1,87	0,52%	1,50	0,41%	0,329	0,09%	-	0,00%	-	0,00%
	Indian	34,18	9,34%	32,69	9,11%	34,59	9,52%	34,894	9,75%	29,676	9,70%	27,00	10,26%
	White	68,53	18,73%	68,35	19,04%	64,46	17,74%	53,817	15,03%	47,835	15,64%	40,08	15,22%
	No Information	-	0,00%	-	0,00%	-	0,00%	0,753	0,21%	-	0,00%	-	0,00%
Total		365,94	100%	358,99	100%	363,38	100%	358,01	100%	305,91	100%	263,26	100%
Nationality	South African	-	0,00%	-	0,00%	-	0,00%	-	0,00%	-	0,00%	236,61	89,88%
	Asia	3,51	0,96%	1,00	0,28%	2,00	0,55%	2,11	0,59%	1,838	0,60%	2,00	0,76%
	Australia	-	0,00%	-	0,00%	-	0,00%	-	0,00%	-	0,00%	1,00	0,38%
	Europe	1,95	0,53%	3,38	0,94%	2,08	0,57%	1,00	0,28%	1,497	0,49%	0,66	0,25%
	SADC	340,69	93,10%	334,40	93,15%	337,96	93,00%	322,76	90,15%	283,74	92,75%	13,00	4,94%
	Other African	19,80	5,41%	20,21	5,63%	21,34	5,87%	19,21	5,37%	18,833	6,16%	9,99	3,80%
	Other	-	0,00%	-	0,00%	-	0,00%	12,93	3,61%	-	0,00%	-	0,00%
Total		365,94	100%	358,99	100%	363,38	100%	358,01	100%	305,91	100%	263,26	100%

Doctoral Qualifications







LUDWIG HANSEN ARCHITECTS + URBAN DESIGNERS



RESEARCH HIGHLIGHTS

- 1. SARChi Chair in Nanotechnology:** A centre of Excellence and SARChi Chair in Nanotechnology in the Chemistry Department involved in cutting-edge and innovative research on materials of development and medicinal properties and application of nanoparticles.
- 2. Cutting-edge cancer research:** Collaboration with biomedical researchers from the Medical Research Council in cutting-edge cancer research in a search for earlier detection of treatment of this killer disease, led by a team of researchers and postgraduate students from the Biochemistry and Microbiology Department.
- 3. Atmospheric science LiDAR:** Installation of atmospheric laser radar, also known as LiDAR (Light Detection And Ranging), a state-of-the-art instrument for active remote sensing of the earth's atmospheric. The LiDAR is used for accurate weather forecasting, climate modelling and air quality monitoring, in support of atmospheric science research by the Department of Geography researchers. UNIZULU is only the second University in Africa to own an atmospheric science LiDAR.
- 4. AstroLab remote telescope observations:** Introduction and the recent implementation of the AstroLab astronomy computer module by astrophysicists of the Physics and

The primary aim of this global initiative is to build a fully distributed network infrastructure for the Internet of Things as an alternative to offerings from commercial operators.

Mathematics departments, which allows students and researchers in astronomy to perform real-time observations with a remote telescope. A remote telescope, being permanently accessible, allows observations from anywhere, thereby enhancing research collaboration possibilities.

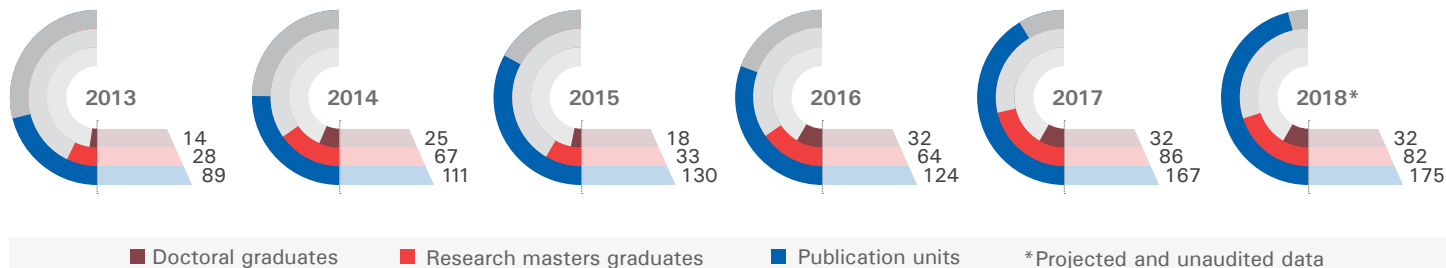
5. **Water resource research:** Focused, sustainable surface, and groundwater resource management by the Hydrology Department, a research focus area of national importance, given the ongoing water scarcity resource management issues across the country.
6. **Waterless Toilet Prototype:** Primarily focused on providing a practical and alternative solution to the sanitation facilities in rural South Africa, championed by the Chemistry Department. This is another research focus area of national importance, advocating for dry sanitation for the fourth industrial revolution as a safe, sustainable, cost-effective and environmentally friendly solution.
7. **CSIR-linked spectrum use monitoring:** The Computer Science Department is involved in a national project with CSIR to monitor spectrum usage in the country. A spectrum analyser was recently installed on the main campus and is feeding spectrum usage data into a national database, to be used by the government and the telecommunications regulator to inform national policy and spectrum allocations for future 5G telecommunications networks in South Africa.

*The Computer
Science Department
currently possesses
the only sensor
gateway in
KZN compatible
with The Things
Network.*

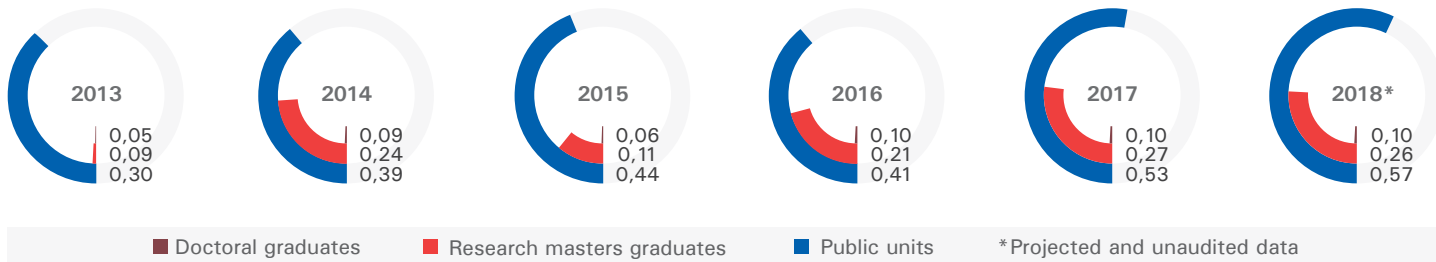
8. The Things Network development: The Computer Science Department is also involved in developing The Things Network, a global initiative to build crowd-sourced wireless sensor networks using LoRaWAN technology.

RESEARCH HIGHLIGHTS

Research Outputs



Ratios of Research Outputs to Permanent Academic Staff



HONORARY DEGREES

Alumni UNIZULU has a proud history of producing leaders in different spheres of our society. From its inception, great leaders, professionals and business people have gone through the academic conveyor belt of the Institution. It is this proud tradition and heritage that makes UNIZULU continue to strive for excellence in its journey. Many of the UNIZULU graduates hold positions of seniority in business, academia, politics, industry and the media.

Graduation Year	ALUMNI /ALUMNA	
1995	DEd Professor A.C. Nkabinde DTh Professor G.C. Oosthuizen	LLD Deputy President, Dr F.W. de Klerk
1996	DPhil Professor S. Kupe LLD Professor N.E. Wiehahn	DEd Professor H.B. Kruger
1998	LLD President of South Africa, Dr N.R. Mandela DPhil Premier of KwaZulu-Natal, Dr B.S. Ngubane	DTh Chairman of the Truth and Reconciliation Commission, Dr K.E.M. Mgojo
1999	DSc Dr M.V. Gumede (<i>posthumously</i>)	LLD Dr F.T. Mdlalose
2000	DTh Rev Fr Bishop M.D. Biyase	
2001	DPhil Dr J.S.M. Khumalo DPhil Dr E.T.Z.S. Mthiyane DEd Dr J.L. van der Walt MA Rev H.B. du Toit DPhil Dr T.M.E. Nene	DPhil Mntwana Princess Magogo C. Buthelezi KaDinuzulu (<i>Posthumously</i>) DLitt Dr D.B. Ntuli DPhil Dr B.J. Shabalala LLD Dr J.A.M. Luthuli DAdmin Deputy President of South Africa, Dr J.G. Zuma
2002	DEd Premier of KwaZulu-Natal, Dr L.P.H.M. Mtshali	DPhil Dr R.S. Khumalo
2004	DPhil Dr I. Khoza	
2005	DAdmin Premier of KwaZulu-Natal, Dr J.S. Ndebele	
2006	DSc Dr P. O'Brien	
2013	DLitt Dr S. Khumalo	
2018	DSoc Work His Majesty King Zwelithini Zulu	

FACULTIES AND DEPARTMENTS

Faculty of Science and Agriculture

- Agriculture
- Biochemistry and Microbiology
- Consumer Sciences
- Geography and Environmental Studies
- Mathematical Science
- Nursing Science
- Physics and Engineering
- Zoology
- Science Access
- Computer Science
- Chemistry
- Botany
- Biokinetics and Sports Sciences

Faculty of Education

- Educational Psychology
- Mathematics, Science and Technology

- Early Childhood Education
- Curriculum and Instructional Studies
- Educational Foundations and Management
- Education Professional Practice
- Languages and Arts Education
- Social Sciences Education

Faculty of Arts

- African Languages and Culture
- Communication Science
- Creative Arts
- Criminal Justice
- Development Studies and Anthropology
- Dual Major (BA)
- English
- Gen. Linguistics and Modern Languages

- Geography and Environmental Studies
- History
- Information Studies
- Philosophy and Applied Ethics
- Psychology
- Recreation and Tourism
- Social Work
- Sociology

Faculty of Commerce, Administration, and Law

- Accounting
- Business Management
- Economics
- Industrial Psychology
- Public Administration
- Law

INSTITUTIONS



UNIZULU's internationally acclaimed science centre celebrated its 30th anniversary in 2016 and launched its pre-school Children's Museum – a first for Africa, in 2011. Located within the Zululand Chamber of Business Foundation (ZCBF) Community Park in Richards Bay, the Centre has received numerous accolades for promoting interest in Science, Engineering and Technology and is home to more than 230 innovative exhibits produced locally and abroad. The Centre forms an integral part of the University's community outreach initiative that is focused on developing inquiring minds.

Achievements

- The Science Centre has been a finalist for the prestigious NSTF Awards 5 times – every time it has entered. It was a winner on two of those occasions; and

Annually, the Centre sees an average of 30000 visitors, while reaching a similar number through outreach programmes.

- The Southern African Association of Science and Technology Centres (SAASTEC) was founded after a meeting at USC in 1995, and USC staff have served on SAASTEC's board almost continuously since then, including three terms as President. It has hosted four of the 21 SAASTEC conferences.

Centre For Sustainable Integrated Rural Development (Csird)

The CSIRD which was established in 2015 represents the University of Zululand's (UNIZULU) commitment to developing a niche academic capacity that can contribute to addressing the key questions and challenges related to its rural location. In this sense, the Centre is an important platform that contributes to the structuring of the University for relevance. It is driven by a two-pronged mandate; one of promoting transdisciplinarity within UNIZULU in a way that makes it possible to respond to the multifaceted development problems in a comprehensive, sustainable and coordinated way. In carrying out this trajectory, the Centre works with all faculties, centres and units within the University as well as external partners which include government departments and non-governmental organisations. With regard to the other main function of the Centre, it has been given the responsibility to develop and deliver a transdisciplinary core first-year course, UNIZULU 101, designed to lay the foundation for producing critical and socially engaged graduates.

*The University
pursues an agenda
for scholarly
investigation in
response to social
problems, with
community service
being systematically
integrated into the
formal curriculum.*

Widening Participation

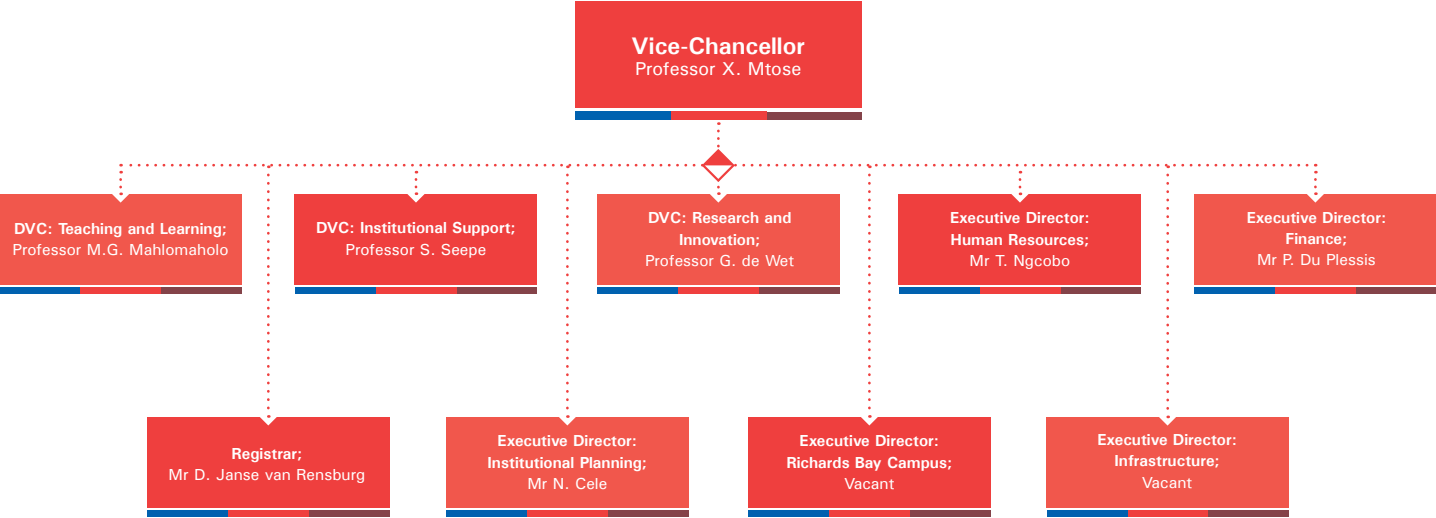
In order to ensure that it remains in touch with national and international trends and practices, UNIZULU is determined to maintain and augment its network of links with peers and partners, which includes business, industry and government institutions – locally and internationally. For this reason, it has extended its existing links with a wide array of tertiary education institutions in the United States and in Europe by establishing partnerships with the University of Mississippi, Radford University, Florida Agricultural and Mechanical University and Chicago State University.

It strives to produce highly knowledgeable and skilled graduates who are patriotic and actively participate in society. In order to do so effectively, it seeks to cultivate relationships with funding agencies at home and abroad.

DEANS



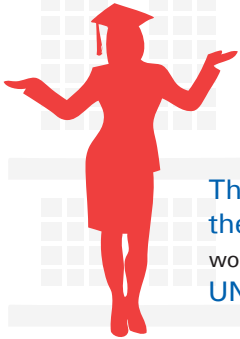
EXECUTIVE LEADERSHIP



DID YOU KNOW?



Three of the nine judges on the bench of the Constitutional Court (the highest court in South Africa), including the Chief Justice and Deputy Chief Justice, are UNIZULU alumni.



The former Chairperson of the African Union and the first woman to lead the organisation is a UNIZULU alumna.

Two of the five judges on the bench of the Supreme Court of Appeal (the second highest court in South Africa) are UNIZULU alumni.



More than two Cabinet Ministers and Members of Parliament (MP's) in the current government are UNIZULU alumni.



ARTS AND CULTURE



Two of the founding members of Joyous Celebration – South Africa's most successful gospel choir, which was formed in 1994 following the success of South Africa's first democratic elections – are UNIZULU alumni.

The South African songstress, former Vice person and Chair for the National Arts Festival Board Dr Sibongile Khumalo is an alumna and holds an Honorary Degree from UNIZULU.





For more information, contact:

Strategic Analytics and Business Intelligence
Office of the Institutional Planning Directorate
University of Zululand, KwaDlangezwa
Private Bag X1001
KwaDlangezwa, 3886

Tel: +27 35 902 6656/5
Fax: +27 35 902 6662
Email: sabio@unizulu.ac.za
Web: www.unizulu.ac.za



UNIVERSITY OF
ZULULAND