



UNIVERSITY OF
ZULULAND

FACTS & FIGURES

2016/2017



RESTRUCTURED FOR RELEVANCE

ABOUT US

University of Zululand (UNIZULU) is located within the Umhlathuze Municipality, the fastest growing industrial hub and employer in northern KwaZulu-Natal. UNIZULU is a comprehensive university offering approximately 252 accredited degrees, diploma and certificate courses across its faculties of Arts; Education; Science and Agriculture; and Commerce, Administration and Law at the KwaDlangezwa and Richards Bay campuses.

Popular courses include Law, Education, Nursing Science, Agronomy, Hydrology, Social Work, Biochemistry, Microbiology and Sport Science. UNIZULU students have the opportunity to specialise their degrees according to their areas of interest, within their respective fields. In addition, the University believes in promoting a culture of learning in an environment that is conducive to personal growth and academic development. To further academic development, assistance is provided through the provision of augmented and foundation courses to unleash students' potential.



OUR VISION

A leading comprehensive university providing quality education.

OUR MISSION

To provide globally competitive graduates, relevant for the human capital needs of our country by providing quality education that upholds high standards of research and academic excellence.

OUR VALUES



ACCOUNTABILITY

subscribing to integrity and transparency.



EFFICIENCY

sustaining high levels of productivity.



TEAMWORK

working together to accomplish a common goal.



MUTUAL TRUST

inculcating dependable and trustworthy relationships and mutual respect.

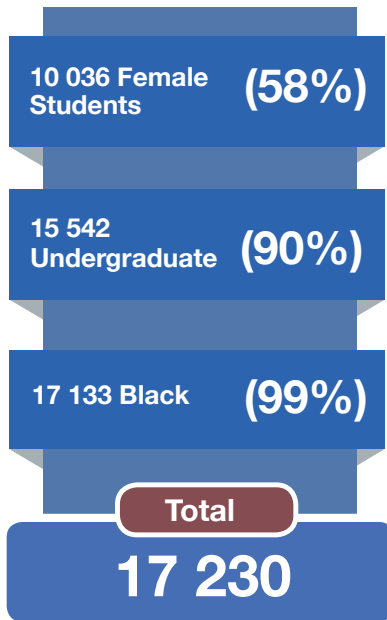
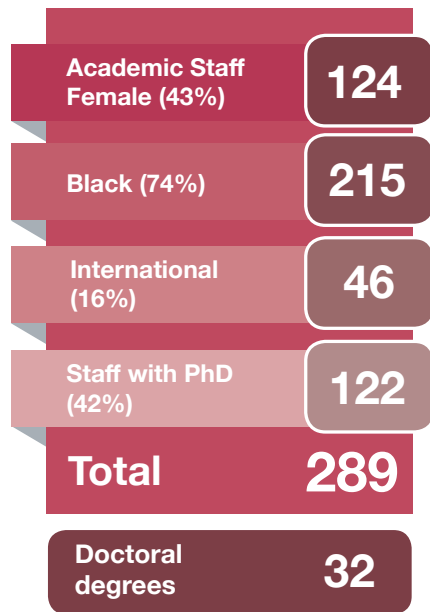


INNOVATION

Promoting attributes of excellence, creativity and discovery among students and staff.



AT A GLANCE





STATEMENT OF 'GRADUATENESS'

UNIZULU aims to produce graduates who fulfill various roles as professionals and members of civil society, with a balanced set of attributes. Such attributes include an in-depth knowledge of their specialisation; being reasonably knowledgeable across various disciplines; citizenship with a strong sense of the public good and social responsibility; commanding of intellectual integrity; critical thinking skills; reflective thinking ability; possessing functioning knowledge to confront complex problems; being attuned to cultural diversity; commanding intellectual integrity; and having an understanding of life complexities as an opportunity for critical engagement. These attributes will enable our students to develop life skills that will make them influential and highly regarded professional practitioners, entrepreneurs, researchers, thinkers, and members of civil society.

QUICK FACTS

UNIZULU is among the few universities that received re-accreditation after the national review of the LLB programme. The national review focused on all LLB programmes, which included first-degree integrated programmes, second-degree programmes following a BA (Law), B Com (Law), among others.

The UNIZULU library spans six floors, with a sitting capacity of more than 1 700 and its users have access to 306 708 volumes of books and multimedia.

The University has 14 NRF-rated researchers in the following fields: English; Creative Arts; Politics and International Studies; Information Science; Psychology; Mathematics; Chemistry; Physics and Engineering; Botany; Agriculture and Zoology.

The dome-shaped King Bhekuzulu Hall is one of the largest of such structures in South Africa. Its space is ideal for academic and cultural events and can be transformed according to the nature and size of an event. A range of informative and entertaining events are regularly held here.



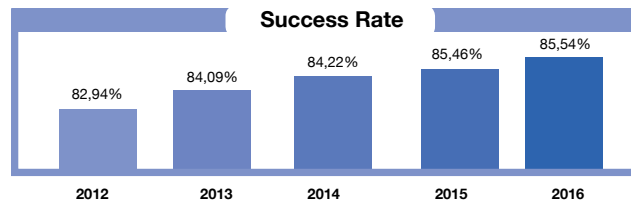
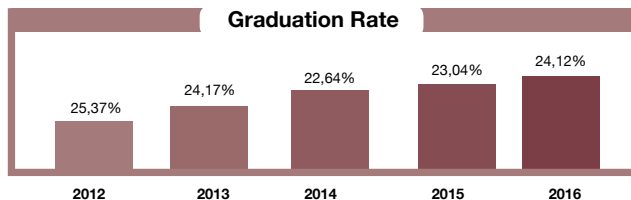
STUDENT PROFILE

ENROLMENT TRENDS

		Student Headcount Enrolment and %											
		2012		2013		2014		2015		2016		2017	
Gender	Female	10 624	64.65%	10 397	62.67%	10 096	60.59%	9 978	59.07%	10 308	58.34%	10 036	58.25%
	Male	5 810	35.35%	6 194	37.33%	6 567	39.41%	6 913	40.93%	7 360	41.66%	7 194	41.75%
Total		16 434	100.00%	16 591	100.00%	16 663	100.00%	16 891	100.00%	17 668	100.00%	17 230	100.00%
Race	African	16 323	99.32%	16 466	99.25%	16 517	99.12%	16 755	99.19%	17 537	99.26%	17 133	99.44%
	Coloured	14	0.09%	26	0.16%	33	0.20%	33	0.20%	27	0.15%	25	0.15%
	Indian	50	0.30%	55	0.33%	62	0.37%	66	0.39%	65	0.37%	45	0.26%
	White	45	0.27%	44	0.27%	46	0.28%	31	0.18%	32	0.18%	21	0.12%
	Other	2	0.01%		0.00%	5	0.03%	6	0.04%	7	0.04%	6	0.03%
Total		16 434	100.00%	16 591	100.00%	16 663	100.00%	16 891	100.00%	17 668	100.00%	17 230	100.00%
Type	PG	1 450	8.82%	1 735	10.46%	1 792	10.75%	1 601	9.48%	1 891	10.70%	1 688	9.80%
	UG	14 984	91.18%	14 856	89.54%	14 871	89.25%	15 290	90.52%	15 777	89.30%	15 542	90.20%
Total		16 434	100.00%	16 591	100.00%	16 663	100.00%	16 891	100.00%	17 668	100.00%	17 230	100.00%

Graduate Headcount and %

		2012		2013		2014		2015		2016	
Gender	Female	2 871	68.82%	2 755	68.50%	2 538	67.14%	2 426	62.32%	2 537	59.46%
	Male	1 301	31.18%	1 267	31.50%	1 242	32.86%	1 467	37.68%	1 730	40.54%
Total		4 172	100%	4 022	100%	3 780	100%	3 893	100%	4 267	100%
Race	African	4 131	99.02%	3 994	99.30%	3 749	99.18%	3 856	99.05%	4 234	99.23%
	Coloured	3	0.07%	4	0.10%	4	0.11%	8	0.21%	7	0.16%
	Indian	17	0.41%	16	0.40%	12	0.32%	17	0.44%	11	0.26%
	White	18	0.43%	8	0.20%	14	0.37%	11	0.28%	13	0.30%
	Other	3	0.07%	0	0%	1	0.03%	1	0.03%	2	0.05%
Total		4 172	100%	4 022	100%	3 780	100%	3 893	100%	4 267	100%
Qualification Type	PG	535	12.82%	779	19.37%	835	22.09%	728	18.70%	893	20.93%
	UG	3 637	87.18%	3 243	80.63%	2 945	77.91%	3 165	81.30%	3 374	79.07%
Total		4 172	100%	4 022	100%	3 780	100%	3 893	100%	4 267	100%



ACADEMIC STAFF PROFILE

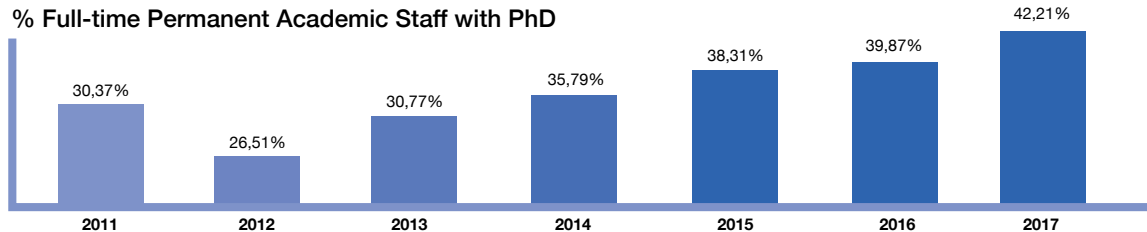
Full-time Permanent Academic Staff Headcount

		2012		2013		2014		2015		2016		2017	
Gender	Female	169.04	43%	164.17	43%	156.39	43%	152.60	43%	153.80	42%	124	42.91%
	Male	221.44	57%	214.75	57%	209.56	57%	206.39	57%	209.58	58%	165	57.09%
Total		390.48	100%	378.92	100%	365.94	100%	358.99	100%	363.38	100%	289	100%
Race	African	209	70.13%	209	69.90%	201	70.53%	204	69.15%	219	71.57%	215	74.39%
	Coloured	2	0.67%	2	0.67%	2	0.70%	2	0.68%	2	0.65%	0	0.00%
	Indian	30	10.07%	32	10.70%	29	10.18%	33	11.19%	32	10.46%	30	10.38%
	White	57	19.13%	56	18.73%	53	18.60%	56	18.98%	0	0.00%	43	14.88%
	Other	0	0%	0	0%	0	0%	0	0%	53	17.32%	1	0.35%
Total		298	100%	299	100%	285	100%	295	100%	306	100.00%	289	100%
Rank	Professor	18	6.04%	18	6.02%	15	5.26%	17	5.76%	19	6.21%	16	5.54%
	Associate professor	22	7.38%	23	7.69%	23	8.07%	23	7.80%	28	9.15%	26	9.00%
	Senior lecturer	44	14.77%	48	16.05%	44	15.44%	45	15.25%	50	16.34%	51	17.65%
	Lecturer	179	60.07%	174	58.19%	173	60.70%	186	63.05%	190	62.09%	183	63.32%
	Junior lecturer	35	11.74%	36	12.04%	30	10.53%	24	8.14%	19	6.21%	13	4.50%
Total		298	100%	299	100%	285	100%	295	100%	306	100%	289	100%
Nationality	Asian	0	0%	1	0.33%	1	0.35%	1	0.34%	1	0.33%	1	0.35%
	Europe	0	0%	1	0.33%	1	0.35%	2	0.68%	2	0.65%	2	0.69%
	Other African	10	3.36%	9	3.01%	9	3.16%	9	3.05%	13	4.25%	19	6.57%
	South African	270	90.60%	268	89.63%	256	89.82%	267	90.51%	276	90.20%	243	84.08%
	SADC	18	6.04%	20	6.69%	18	6.32%	16	5.42%	14	4.58%	24	8.30%
Total		298	100%	299	100%	285	100%	295	100%	306	100%	289	100%

Academic Staff Full-time Equivalent

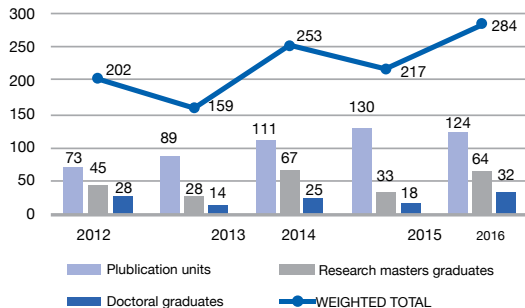
		2012		2013		2014		2015		2016	
Gender	Female	169.04	43%	164.17	43%	156.39	43%	152.60	43%	153.80	42%
	Male	221.44	57%	214.75	57%	209.56	57%	206.39	57%	209.58	58%
Total		390.48	100%	378.92	100%	365.94	100%	358.99	100%	363.38	100%
Race	African	286.91	73%	275.27	73%	260.32	71%	256.08	71%	262.84	72%
	Coloured	2.33	1%	3.92	1%	2.92	1%	1.87	1%	1.50	0%
	Indian	32.62	8%	32.53	9%	34.18	9%	32.69	9%	34.59	10%
	White	68.62	18%	67.21	18%	68.53	19%	68.35	19%	64.46	18%
Total		390.48	100%	378.92	100%	365.94	100%	358.99	100%	363.38	100%
Nationality	Asian		0%	0.69	0%	3.51	1%	1.00	0%	2.00	1%
	Europe		0%	1.00	0%	1.95	1%	3.38	1%	2.08	1%
	Other African	17.39	4%	15.60	4%	19.80	5%	20.21	6%	21.34	6%
	SADC	373.08	96%	361.62	95%	340.69	93%	334.40	93%	337.96	93%
Total		390.48	100%	378.92	100%	365.94	100%	358.99	100%	363.38	100%

% Full-time Permanent Academic Staff with PhD

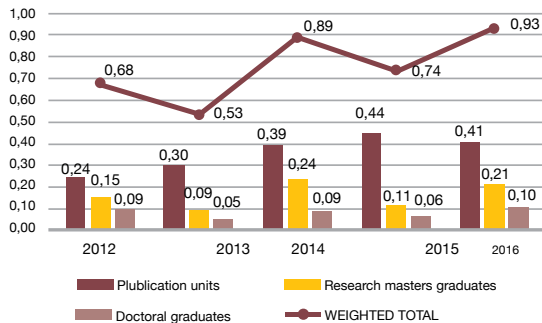


RESEARCH

Research Outputs



Ratios of Research Outputs to Permanent Academic Staff



The University hosts a South African Research Chairs Initiative (SARChI) in Nanotechnology. The Chair is seen as a Materials Science Centre of Excellence in Africa. It has become a partner of choice and has attracted collaborators from East and West Africa, India and the United Kingdom.

HONORARY DEGREES

ALUMNI

UNIZULU has a proud history of producing leaders in different spheres of our society. From its inception, great leaders, professionals and business people have gone through the academic conveyor belt of the Institution. It is this proud tradition and heritage that makes UNIZULU continue striving for excellence in its journey. Many of the UNIZULU graduates hold positions of seniority in business, academia, politics, industry and the media.



1994

DPhil
His Majesty
King Zwelithini
Zulu



1995

DEd Professor
AC Nkabinde
DTh Professor
GC Oosthuizen
LLD Deputy
President
Dr FW de Klerk



1996

DPhil Professor
S Kupe
LLD Professor
NE Wiehahn
DEd Professor
HB Kruger



1997

DEd Dr ISF Kubeka
LLD Justice
EM Tshabalala
LLD Justice
PS Langa
DPhil
Dr IF Garland



1998

LLD President of South
Africa, Dr NR Mandela
DPhil Premier of KwaZulu-
Natal, Dr BS Ngubane
DTh Chairman of the
Truth and Reconciliation
Commission, Dr KEM Mgojo



1999

DSc Dr MV Gumede
(posthumously)
LLD Dr FT Mdlalose



2000

DTh
Rev Fr Bishop
MD Biyase



2001

DPhil Dr JSM Khumalo
DPhil Dr ETZS Mthiyane
DLitt Dr DB Ntuli
DPhil Mntwana Princess
Magogo C Buthelezi
KaDinuzulu (Posthumously)
DEd Dr JL van der Walt
MA Rev HB du Toit
DPhil Dr TME Nene
DPhil Dr BJ Shabalala
LLD Dr JAM Luthuli
DAdmin Deputy President
of South Africa, Dr JG Zuma



2002

DEd Premier of
KwaZulu-Natal,
Dr LPHM Mtshali
DPhil
Dr RS Khumalo



2004

DPhil
Dr I Khoza



2005

DAdmin Premier
of KwaZulu-Natal,
Dr JS Ndebele



2006

DSc
Dr P O'Brien

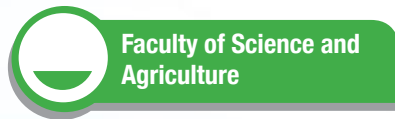


2013

DLitt
Dr S Khumalo



FACULTIES AND DEPARTMENTS



Faculty of Science and Agriculture

Faculty of Science and Agriculture
Agriculture
Biochemistry and Microbiology
Consumer Sciences
Geography and Environmental Studies
Mathematical Science
Nursing Science
Physics and Engineering
Zoology
Science Access
Computer Science
Chemistry
Botany
Biokinetics and Sports Sciences



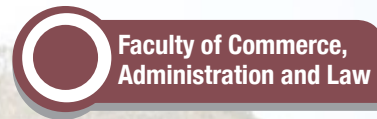
Faculty of Education

Educational Psychology
Mathematics, Science and Technology
Early Childhood Education
Curriculum and Instructional Studies
Educational Foundations and Management
Education Professional Practice
Languages and Arts Education
Social Sciences Education



Faculty of Arts

African Languages and Culture
Communication Science
Creative Arts
Criminal Justice
Development Studies and Anthropology
Dual Major (BA)
English
Gen. Linguistics and Modern Languages
Geography and Environmental Studies
History
Information Studies
Philosophy and Applied Ethics
Psychology
Recreation and Tourism
Social Work
Sociology



Faculty of Commerce, Administration and Law

Accounting
Business Management
Economics
Industrial Psychology
Public Administration
Law

MAKING A DIFFERENCE

The Project: Growing a Taste for the Entrepreneurial Spirit in Communities

The Challenge

Child-headed households are prevalent in South Africa. Acquiring basic needs such as food is a struggle for these families, considering that the children are often unemployed. On the other side of the coin, many elderly-headed households suffer the same ills and rely on social grants as their source of income.

Seeing Possibilities

The Enactus UNIZULU team collaborated with a small-to-medium enterprise that has a registered co-operative known as A B Ngwelezane. The co-operative produces, processes and preserves vegetables. The aim of the project is to establish a business that produces traditional food, expanding into a restaurant. Having established the co-operative, Enactus has also involved itself in community work by assisting child-headed and elderly-headed households with food and other necessities. The project is based at Ngwelezane Township under uMhlathuze Local Municipality within the UThungulu District Municipality in the Zululand region of KwaZulu-Natal (KZN).

Taking Action

The co-operative earns its income through the Indigenous Food Sale Programme, catering services and profit gained from selling its vegetable atchar product. It entered its first competition, the Female Entrepreneurs Awards, hosted by the KwaZulu-Natal Department of Agriculture, Environmental Affairs & Rural Development and won, receiving a R110 000 cash prize for Top Processing Entrepreneurs. Enactus UNIZULU is working with uMhlathuze Local Municipality on its One-Home-One-Garden initiative and it plans to introduce workshops on SMME establishment, specifically targeting young people of Ngwelezane.

Enabling Progress

Working with the Agricultural Research Council in the University, the team is working on assisting more agricultural co-operatives with expanding their operations as well as developing them to be as successful as A B Ngwelezane Co-operative. The team, together with the co-operative, aspire to have a second product sent for testing, barcoding and patenting to SABS once results for the vegetable atchar have been obtained.

PUBLIC INSTITUTIONS



UNIZULU SCIENCE CENTRE

UNIZULU SCIENCE CENTRE

UNIZULU's internationally acclaimed science centre celebrated its 30th anniversary in 2011, along with the launch of its early childhood development museum – a first for Africa. Located within the Zululand Chamber of Business Foundation (ZCBF) Community Park in Richards Bay, the Centre has received numerous accolades for promoting interest in Science, Engineering and Technology and is home to more than 130 innovative exhibits produced locally and abroad. The Centre forms part of the University's community outreach initiative that is focused on developing inquiring minds.

CENTRE FOR SUSTAINABLE INTEGRATED RURAL DEVELOPMENT (CSIRD)

The Centre was launched in 2015 as a result of a partnership forged between the KZN Department of Agriculture and Rural Development and UNIZULU. The main purpose of the Chair is to improve the socio-economic environment of rural communities through an inter-disciplinary approach to offer relevant academic, research and outreach programmes. Furthermore, the Chair is expected to work in collaboration with partners in the private and public sector; non-governmental organisations; labour and community-based organisations.

ACHIEVEMENTS

- ▶ UNIZULU Science Centre (USC) staff have served on the Southern African Association of Science and Technology Centres (SAASTEC);
- ▶ The Science Centre won three separate business awards at the end of 2004. It has hosted four of the 18 SAASTEC conferences, including the recent UNESCO International Science Centre and Science Museum Day on 10 November 2016; and
- ▶ Annually, the Centre sees an average of 30 000 visitors, while reaching another 30 000 people through outreach programmes.

WIDENING PARTICIPATION

In order to ensure that it remains in touch with national and international trends and practices, UNIZULU is determined to maintain and augment its network of links with peers and partners, which includes business, industry and government institutions – locally and internationally. For this reason, it has extended its existing links with a wide array of tertiary education institutions in the United States and in Europe by establishing partnerships with the University of Mississippi, Radford University, Florida Agricultural and Mechanical University and Chicago State University.

The University pursues an agenda for scholarly investigation in response to social problems, with community service being systematically integrated into the formal curriculum.

It strives to produce highly knowledgeable and skilled graduates who are patriotic and actively participate in society. In order to do so effectively, it seeks to cultivate relationships with funding agencies at home and abroad.

HIGH QUALITY ACADEMIC AND CAREER-FOCUSED PROGRAMMES

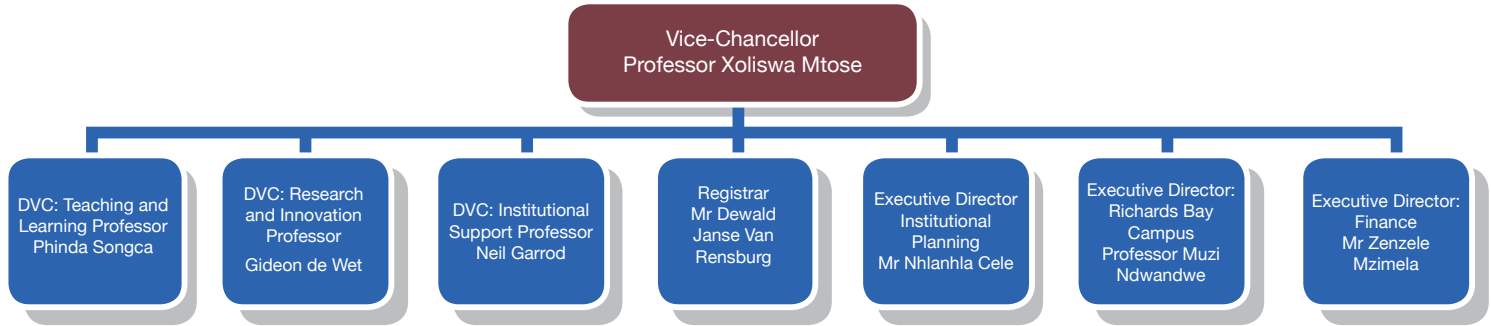
The University continues to revitalise undergraduate programmes by closely monitoring and evaluating the implementation of the teaching and learning strategy.

The strategic thrust of the plan is to contribute to the attainment of the University's vision and mission by developing specific objectives and achievable targets.

The University has, through the Quality Assurance Unit, successfully aligned all University offerings to the Higher Education Qualifications Sub- Framework (HEQSF). These programmes include career-focused certificate and diploma offerings taught at the Richards Bay campus.

Programmes of this nature foster and promote co-operation between the Institution and relevant communities. Presently, the University works closely with, among others, the Richards Bay Port for support in Maritime Studies and the Owen Sithole Agricultural College for agricultural activities, including research in relevant agricultural projects, as well as with several FET colleges within the Empangeni catchment area on possible articulation with University programmes.

EXECUTIVE LEADERSHIP



DEANS



DID YOU KNOW?

- ▶ Three of the nine judges on the bench of the Constitutional Court (the highest court in South Africa), including the Chief Justice and Deputy Chief Justice, are UNIZULU alumni.
- ▶ Two of the five judges on the bench of the Supreme Court of Appeal (the second highest court in South Africa) are UNIZULU alumni.
- ▶ Former Chairperson of the African Union and the first woman to lead the organisation is a UNIZULU alumni.
- ▶ More than three Cabinet Ministers in the current government are UNIZULU alumni.

ARTS AND CULTURE

- ▶ Two of the founding members of Joyous Celebration – South Africa’s most successful gospel choir, which was formed in 1994 following the success of South Africa’s first democratic elections – are UNIZULU alumni.
- ▶ The South African songstress, former Vice person and Chair for the National Arts Festival Board Dr Sibongile Khumalo is an alumni and holds an Honorary Degree from UNIZULU.



**UNIVERSITY OF
ZULULAND**

For more information, contact:
Strategic Analytics and Business Intelligence
Office of the Institutional Planning Directorate
University of Zululand, KwaDlangezwa

Private Bag X1001
KwaDlangezwa, 3886

Tel: +27 35 902 6656/5
Fax: 27 35 902 6662

www.unizulu.ac.za